



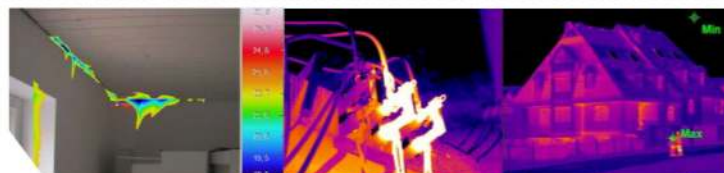
As sonel Infrared's newly launched thermographic IR camera, kt series continues sonel's tradition of offering both high-quality and innovative features. kt series' highlights lies in its rugged and ergonomic design. More than that, its brief operation interface and intelligent button navigation would make the first time user feel as an expert. kt series are equipped with optional lens set for different FOV requirements in different occasions. With built-in illuminator, you can easily take visible photos and compare them with IR photos, which help you find problems more easily.

## Features and Benefits

- **4" high light touch screen**  
Adjustable brightness. Still clear under sunshine. All operation can be completed on the touch screen
- **Optional Lens set**  
You can choose the proper lens for different occasions
- **Built-in illuminator**  
Take visible photos in the low lighting environment
- **Different image type**  
IR, visible, MIF, PIP
- **Removable SD card**  
Up to 32G storage capacity for photos and videos compression storage
- **Wi-Fi share**  
Share IR images and findings immediately
- **Connected with mobile terminal**  
Connected with mobile terminal to take IR photo, to achieve multi screen control

## Applications

- Electrical equipment inspection
- Mechanical maintenance
- Building diagnostic
- Medical diagnosis
- Telecom equipment inspection
- Chemical industry equipment inspection



# Specifications

Model	KT 170	KT 400	
Detector type	Un-cooled FPA		
Detector	160×120	384×288	
Pixel size	25µm	25µm	
Spectral range	8µm~14µm		
NETD	60mk	45mk	
<b>Lens</b>			
Focal length	7mm	19mm	
F#	1.1	1.0	
IFOV	3.57mrad	1.32 mrad	
Min. focus distance	0.5m	0.5m	
FOV	31.9°×24.2°	29.5°×22.3°	
Optical lens	Tele	10.4°×7.8°/15mm/F1.1	13.7°×10.3°/40mm/F1.1
	Wide angle	N/A	57°×45°/8.8mm/F1.0
	High temp	Yes	
Lens installation	Buckle		
Focusing mode	Manual		
<b>Measurement Analysis</b>			
Temp range	1	-20~150°C	
	2	150~650°C	
	3	400~1500°C(High Temperature Filter)	
Accuracy	±2°C /±2%		
Measurement presets	Emissivity, environment temperature, distance, relative humidity		
Radiometric analysis	5 spots, 2 lines, 5 areas(max temp, min temp, average temp), Δ T, isotherm		
<b>Image Presentation</b>			
Display	4"high light touch screen		
Image type	IR, visible ,MIF, PIP		
<b>Hardware</b>			
Hardware	Visible (5 M Pixel), laser, illuminator , Wi-Fi, microphone , speaker		
Interface	USB,HDMI, SD card (16G, up to32G)		
<b>Power System</b>			
Battery type	Li-Ion rechargeable,operation time ≥4hours		
Certification	UN38.3		
Power management	Intelligent sleep mode		
Charge mode	In camera		
<b>Function</b>			
Digital zoom	1.1~4		
Palette	8		
Image storage	Standard JPG data with temp info, image can be displayed on PC with temp. info		
Video storage	Standard H.264 video with temp info		
Info superimpose	Customized LOGO, emissivity, shooting date and time, TMAX,TMIN		
System setting	date, language, timing on and off, factory reset		
Startup time	≤40S		
Image annotation	Voice, text, mark		
Other	60S voice record, isotherm, high/low temp tracking, temp alarm, dew point temp, low battery alarm, instant report		
<b>Working environmental parameter</b>			
Encapsulation	IP54		
Drop test	2m		
Working temp	-10°C~50°C		
Storage temp	-40°C~70°C		
Certification	ROHS,CE,UL		
Dimension	264mm×137mm×78mm		
Weight	740g		

## Sonel Instruments India Pvt Ltd

1B, Block IV, Natwest Vijay,  
Velachery Main Road,  
Pallikaranai, Chennai - 600 100.

E-mail: sales@sonel.in  
Phone: +91 44 426 427 28

